



# INFORMATION PACKAGE

FOR  
KINDERGARTEN  
PARENTS 2022



Scan the QR Code  
to take you to the online  
information package



# WEEKLY PLANNER



We would like to acknowledge the Dharawal people who are the traditional custodians of this land; and recognise their continuing connection to land, waters and community. We pay our respects to them and their culture; and to Elders both past and present for they hold the memories, the traditions, the culture and hopes of Aboriginal and Torres Strait Islander peoples across the nation.



Tuesday

Monday

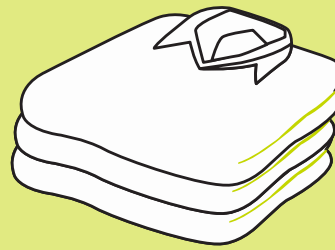
Wednesday

Thursday

Friday



School hat

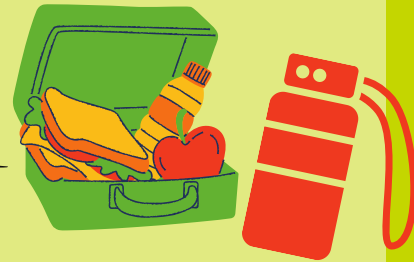


Spare uniform

including spare underwear and socks



Raincoat (preferred) and/or umbrella



Lunch box and drink bottle



Please ensure all items are labelled with first and surname

## WHAT TO PACK IN MY LUNCH BOX?

The Department of Health and Human Services' provides a range of ideas and practical tips to inspire families to create healthy school lunch boxes.

Pick and mix one tasty option from each of the five core food groups to create a healthy lunch box every day:

- Fruit (e.g. fresh, frozen, pureed and canned in natural juice)
- Vegetables, legumes and beans
- Milk, yoghurt, cheese and alternatives
- Lean meats and poultry, fish, eggs, tofu, nuts and seeds, and legumes/beans
- Grain (cereal) foods

Plain water

Did you know.....

We have a Crunch & Sip break every morning as a way to: increase fruit and vegetable intake, support brain development and function, and promote learning.



# WHAT TO PACK

Correct school uniform should be worn at all times and we trust that all parents/carers will do their best to support the school in this area.

The school uniform and accessories are available to purchase online through:  
<https://www.picklesschoolwear.com/school/denham-court-public-school>



## Summer Uniform



## Winter Uniform



## Sports Uniform

To be worn on Sports Day

## School jackets and jumpers



A school hat is a compulsory part of the uniform.

For student safety, the school has a policy of asking students to remain in the shade if they are without a hat.



Black shoes should be worn to school with the exception of sports day when running shoes may be worn.

We strongly encourage students to be able to put on their own shoes.

Did you know....

school uniform promotes a sense of belonging for students and creates a positive identity for the school community. School uniforms also contribute to the personal safety of students by allowing easier recognition of students inside the school and in the community.



Getting your child to and from school is your responsibility – however your child's school wants this to happen safely every day.

Pick the safest way to school and practise travelling the route with your child, talking about how to be a safe road user.

Keep our school community safe by:

- always holding your child's hand when walking and especially when crossing the road
- being a good role model
- meeting and dropping your child on the school side of the road.
- never calling your child from across the road
- using the safest place to cross the road

### Travelling by bike or scooter

Teach your children to be safe riders by always:

- wearing a correctly fitted helmet
- using a well-maintained bike or scooter
- following the road rules
- riding to and from school together
- ensure bikes and scooters are secured in designated areas
- students are not permitted to ride on school grounds..



### Travelling by car

- Ensure your child is in a booster seat and correctly fitted seat belt
- Drive and park safely, even if it means parking further away and walking the rest of the way to school
- Utilise the designated kiss and ride zones. Please use these zones only if your child is confidently identify their car, open the door and put on their own seat belt.
- When children are exiting the vehicle independently please ensure they exit through the passenger side door.

### Travelling to and from school by bus

Waiting for the bus

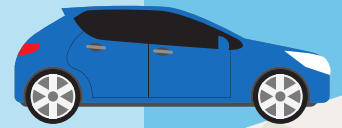
- Always supervise your child until they are at least 10 and hold their hand when walking to and from the bus stop and when crossing the road
- When waiting for the bus, hold hands and stand a few steps back from the edge of the road.

Getting off the bus in the afternoon

- Meet your child at the stop or interchange after school
- Never wait on the opposite side of the road and call them across
- Wait until the bus has gone, then choose a safe place to cross the road

### Did you know....

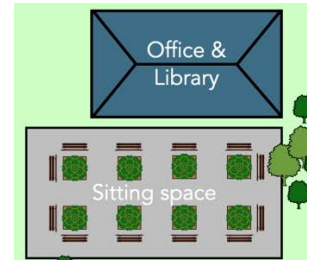
Children who live within two kilometres of school are often driven to school? That means many NSW children could be missing out on the physical, social and mental benefits of active travel- walking, riding or using public transport.



# GETTING TO SCHOOL

# AT SCHOOL

School opens at 8.40 when a member of staff will start supervising students. Children arriving prior to 8.40 will be unsupervised. Children arriving prior to 8.40 will be required to remain in the seated area behind the administration building. During this time children will not be permitted to use the toilets or attend the Canteen. If you require ongoing care for your child prior to school there is onsite before and after school care. Please visit <https://www.whooshcare.com.au/>.



At 8.40 children will be supervised and be able to utilise the whole playground, toilets and visit the canteen. The canteen offers a comprehensive menu including breakfast items. If your child has allergies or any special dietary requirements please discuss these with the canteen staff.

Lunch orders can be placed online, instructions can be found <https://denhamcourt-p.schools.nsw.gov.au/about-our-school/canteen.html>. If students are placing a lunch order at school this must be done prior to 9.10.

Lessons will commence at 9.10. Students will meet their teachers outside their learning hubs. The learning hubs appear different to what most would perceive as a classroom.



When students enter their learning space students will place their bag in the bag area and move into the learning area for the roll to be marked. If students arrive late they need to attend the Office for a late note.

In the learning hubs there is technology to help students complete tasks and lots of different spaces to support students to learn and play.



Throughout the day students may visit the:

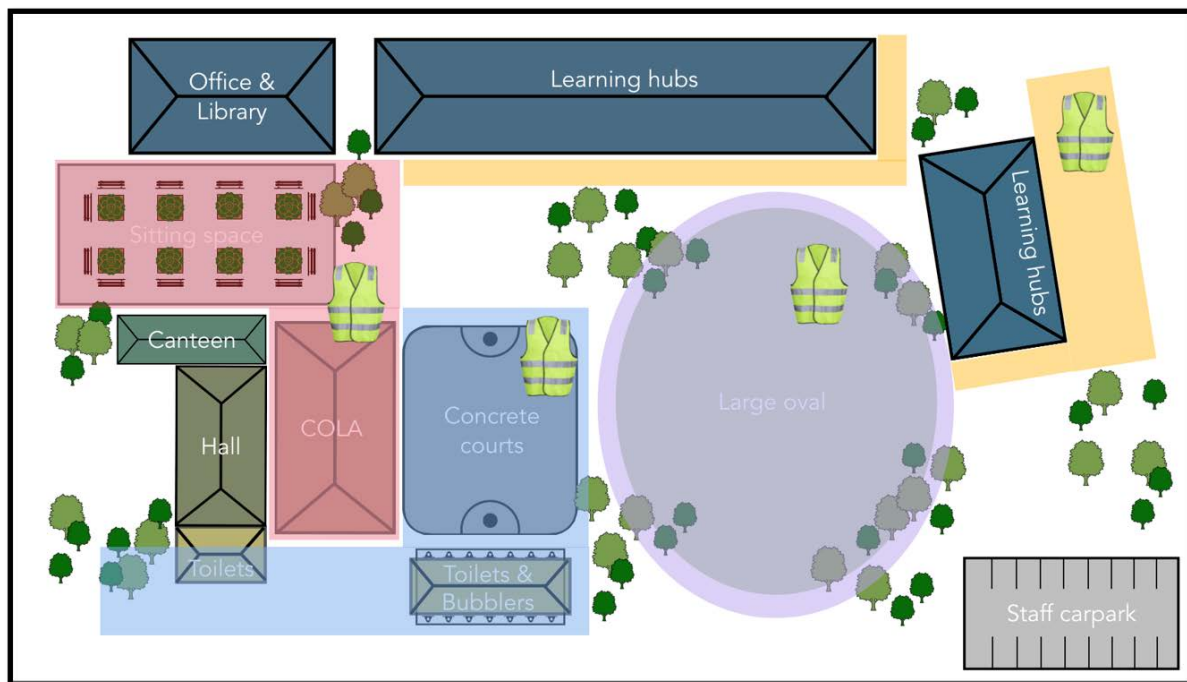
- office if they feel sick or are hurt or to run a message
- library to read, and borrow books
- hall to attend school assemblies.

During the first few weeks of school students will be escorted to the toilets by a member of staff as a whole class prior to breaks and other times as required. When the teachers feel that students are confident with locating the toilets they will commence a buddy system where two or more students will be allowed to go to the toilet together. At this time students will be encouraged to use the toilets during break time. There are two supervised toilet areas in the playground area.

At Denham Court Public School we have three supervised eating times.

- Crunch & Sip - Takes place during the morning session. Students are encouraged to bring in fresh fruit or vegetables to eat and drink water. Please ensure fruit/vegetables are pre-cut or peeled (if required). Children will not be able to go to the Canteen to have this done for them.
- Lunch - This is the main break for the day and starts at 11am. We have supervised eating time from 11.00-11.10 to ensure children are eating and not sharing food. Following eating time children will be released into the playground.
- Afternoon tea - Takes place at 1.40. Students are again supervised for a five minute period. Following eating time children have half an hour to play.
  - Students will have additional eating time for Lunch and Recess during Term 1 as they settle into their new school routines.

There are a minimum of four members of staff supervising outdoor play. Staff members on supervision duties will be wearing fluorescent vests so they can easily be identified by students if they need help. They will also carry basic first aid supplies.



There will be a limited amount of school sports equipment available. Students are welcome to bring equipment, that fits in their school bag, from home. Please ensure the items are clearly labelled so they can be returned to your child if misplaced. Please ensure your child understands that items brought from home remain their responsibility as the school accepts no responsibility for lost or broken items.

Children are required to wear the school hat during playtimes and outdoor lessons. Children that are not wearing a hat will be required to play in a shaded area. These spaces are limited whilst we wait for our trees to mature.



School ends at 3.10pm. During the first few weeks of Kindergarten parents will pick up their students from 2.45pm



Parents are asked to discuss with their child(ren) how they are getting home and if applicable which gate they will be met at and by who. Clear plans reduce anxiety for children. If children are being collected by older students, they will pick them up from the kindergarten students learning hub. Teachers will be on duty at each gate and in the bus waiting area to ensure student safety. If pick up arrangements need to change please call the office so information can be passed onto teachers.

When students get home we encourage you to talk to your child about all the wonderful things that they did and learnt at school that day. Parents will be able to engage with their student's learning through accessing their learning journal on LincEd Hero. More information regarding LincEd Hero and how to connect to this will be communicated with you during Term 1 2022.

Home reading and homework will not be sent home immediately. Staff will communicate with parents when home reading and/or homework will commence.



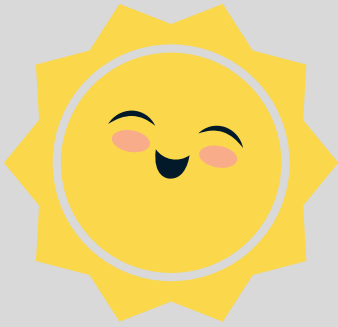
# THE BIG DAY

The first day of school is: \_\_\_\_\_



## The night before

- Lay out your child's clothes, shoes and socks
- Help your child pack their school bag
- Get a good night sleep



## On the day

### In the morning

- Be confident with your child and let them dress themselves
- Tie back or plait long hair
- Pack their lunchbox together
- Apply sunscreen and get your child to wear their hat to school
- Don't forget to take photos
- Talk to your child about who is picking them up and where



### At school

- Children will be met by teachers at the school gates to greet them and make them feel as comfortable as possible
- Teachers will be on duty to ensure all children get safely to their learning hubs



### After school

- Talk to your child(ren) about the amazing things they did at school
- Get your child (ren) to unpack their bags. Giving you any notes or work and placing lunchboxes on the sink
- Go to bed early, ready for an exciting second day of school

# FAQ'S

**Will my child be in the same class as their friends?**

Our main focus is creating harmonious classrooms environments and encouraging children to extend their friendship groups. It is not always possible to put all friends together- you may make a request but this is not guaranteed.

**What days do students wear their sports uniform?**

Official sports day for different age groups occur on different days so that we can share the playground space. Teachers will send home communication to families about their nominated sports day.



**What do I need to buy for the classroom?**

For K-2 nothing is required except a book for homework. Other items that are optional will be advised early in the first term.

**Can my child bring a device to school?**

In Kindergarten students will utilise devices supplied by the school. The school strongly advises that mobile phones are not brought to school. The school accepts no responsibility for loss or damage. Phones must be handed in at the office at the commencement of the school day and collected by the student at the end of the day.



**Where can I park?**

The school car park is for school staff only. There is limited parking in the streets around the school. Please adhere to road rules.

**When can I meet the teacher?**

Unfortunately parents and visitors are not currently permitted onsite. You are most welcome to request a conversation with your child's teacher. The best option would be to contact the office by phone or email and leave a message for the teacher to return your call.



## Stay up to date

Denham Court Public School uses the Skool Loop app to keep in touch with parents and carers regularly. Simply download the app and select Denham Court Public School from the drop down menu.



### Is there a Uniform Shop at School?

There is no onsite uniform shop all uniform purchases and inquiries can be handled by the uniform provider Pickles. They can be contacted through their website <https://www.picklesschoolwear.com/school/denham-court-public-school>

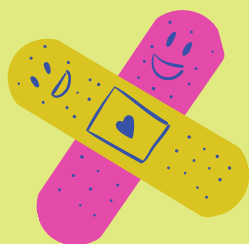
### What sort of library bag does my child need?

Children can use the school library bag available through Pickles or choose their own. We request that bags are waterproof to protect books. These bags can also be used for excursions in the future.



### What do I do if my child has medical or special needs?

If your child has medical needs or special learning needs please book an appointment with the school to discuss. Please ensure you bring all current doctor, medical, therapy reports to assist us to develop an individualised plan of support for your child



### What happens if my child gets sick or hurt at school?

For minor scrapes and bumps all teachers have access to First Aid Kits in the Learning hubs and playground. For more serious cases all Administration Staff at school are First Aid trained and all staff are trained in Asthma Treatment, CPR and Anaphylaxis.

If your child is ill or hurt and needs to be collected early the school will contact the designated emergency contact people on the Enrolment Form. If we are unable to contact anyone on the emergency contact list and it is deemed necessary an ambulance will be called. This is at no expense to the family.

### What happens if a child or member of staff contracts Covid?

The Department has protocols that are in place whereby if there is COVID case onsite, the school will be closed and deep cleaned. The school follows all NSW Department of Health Advice.



### How many children are in each learning hub?

Denham Court Public School is guided by the Department of Education staffing to student ratios. In Kindergarten (early stage 1) there is one teacher to approximately twenty students. Our Learning Hubs are equipped for four classes with four or more teachers.



### How do I contact my child's teachers?

We encourage regular contact between parents/carers and teachers. To speak with teachers please contact the office via phone or email. Teachers will return your call and if necessary arrange a mutually convenient time to meet.

### What do I do if my child is late or needs to leave early?

Children who arrive after 9.10am must report to the office to obtain a late note. Parents/carers who wish to have their child leave school early must report to the office where their child will meet them. Please note children may only be picked up by people 18 or over.

### What do I need to do if we are going on holidays during the term?

Holidays during school time are not condoned absences and will be recorded as such, however the school needs to be notified of any extended absences

### What if my child is absent from school?

The school must be advised if children are absent and the reason. This may be done via Skool Loop, phoning the school or a note provided when they return.

### What happens in extreme weather?

During periods of wet weather, high winds, extreme heat or poor air quality students are kept indoors for safety reasons.

### What are the school fees?

There is no school fee. School contributions are voluntary and payment is a matter for decision by parents. At Denham Court Public School voluntary contributions are set at \$100 per child. This will be capped at \$200 for families with more than two children.

### How can I be involved at the School?

When Covid restrictions lift further we look forward to welcoming parents for P&C, helping in classrooms for reading, maths, project based learning, play and even in the gardens! More information will be available as we have more relaxation of restrictions.



# HINTS FOR STARTING SCHOOL



Practice opening/closing bags, containers or wrappings and drink bottles



Practice putting on and doing up their own shoes



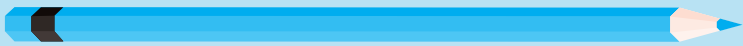
Talk positively about school at home



Practice taking on and off jackets and jumpers



Assist your child in identifying their name - verbally and in writing



Practice putting things in their bags eg jumpers and jackets, lunchboxes



Teaching children how to refill their drink bottles from a tap

